

# DL-Manager

## DL4000 VIDEO TRANSPORT SYSTEM

## SNMP, HTTP Element Management System (EMS)

### SNMP V2c and web monitoring and management of:

- DL4000/4300 chassis
- Power supplies
- Function modules

### Monitoring

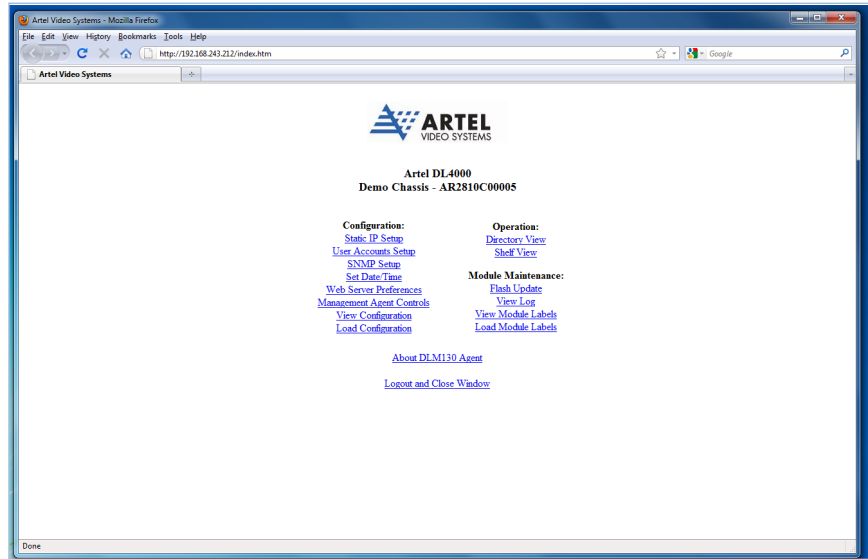
- Auto detect cards and configurations
- Major and minor alarms and events
- Detailed card status
- Alarm status
- Alarm details
- Receive light levels
- Temperature
- Video status and rates
- Error logs

### Provisioning

- Override on-board switch settings
- Enable and disable transport modes and channels

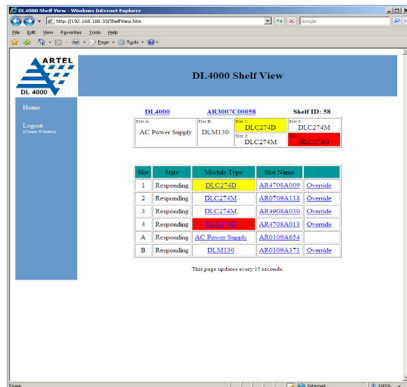
### Maintenance

- Download/upgrade firmware on function modules, power supplies and backplane
- Download/upgrade management software

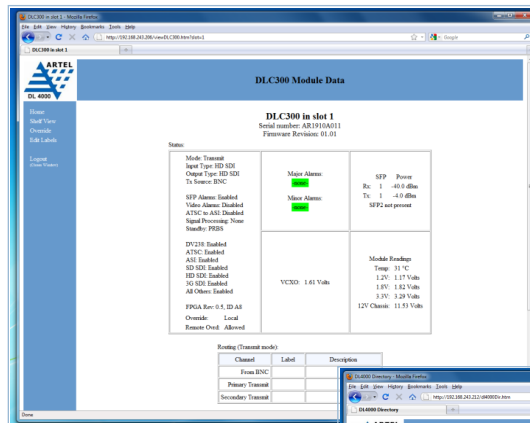


DL-Manager Home Page

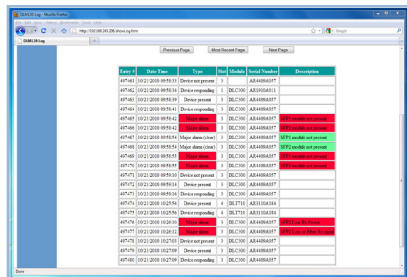
DL-Manager is an HTTP or SNMP v2 based Element Management System for monitoring and managing the DL4000 platform and function modules. Embedded in the DL4000 platform, power supply and function modules, DL-Manager requires no external software to monitor, override on-board switches, or configure a DL4000 system. Using industry standard routers, multiple chassis can be monitored through a single ethernet connection.



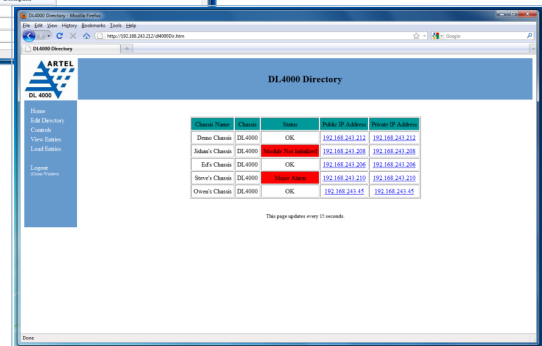
View chassis status



View and configure modules



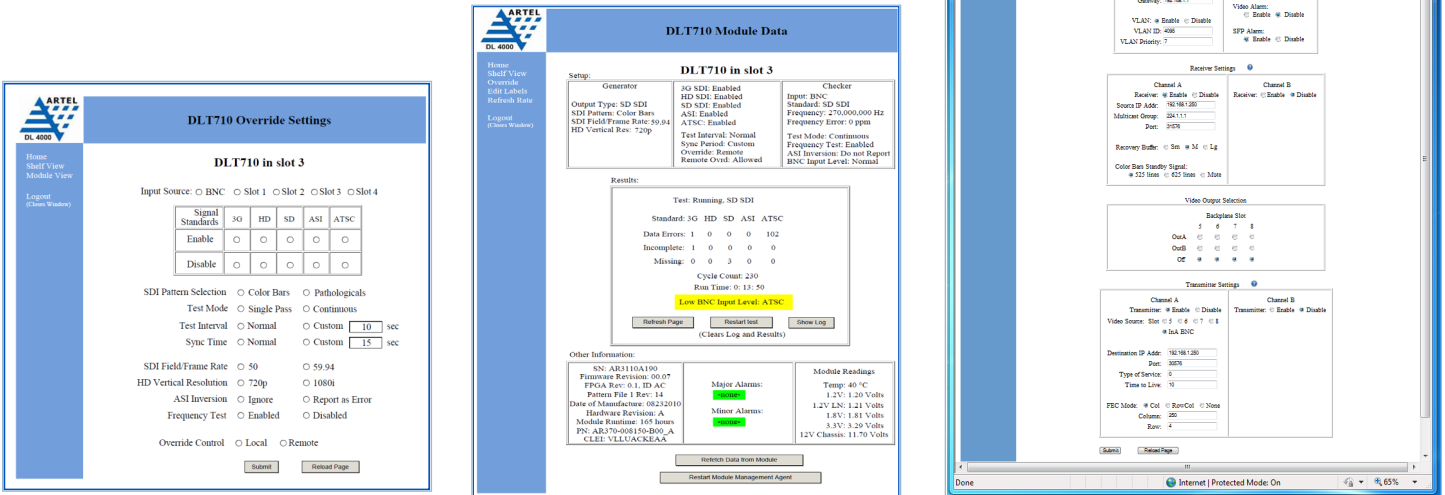
View chassis logs



Manage all chassis in network

# DL-Manager

## SNMP, HTTP Element Management System (EMS) | DataMiner



Configure, monitor, and control chassis, function modules and power supplies.

# DataMiner

## DataMiner NMS for Artel DL4000 Platform

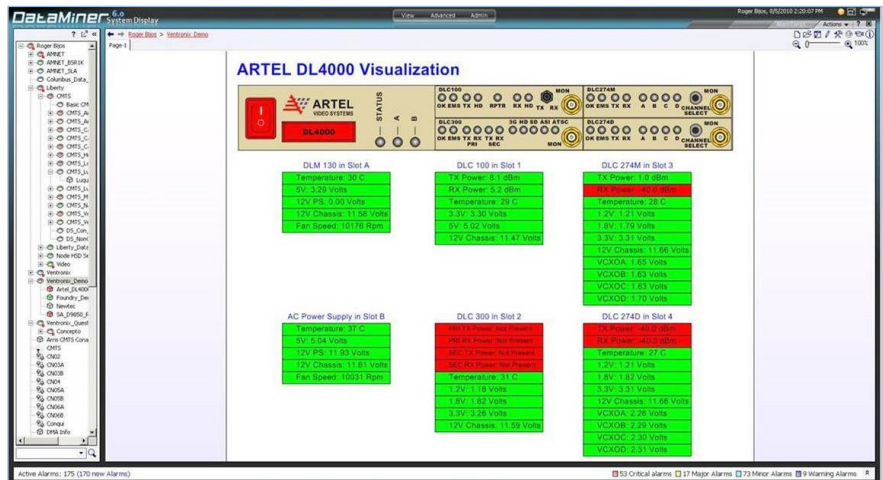
- Professional monitoring and control of Artel DL4000 platform deployments.
- Reduce errors and OPEX of your operations.
- Increase overall system reliability, availability and performance.
- Manage configurations efficiently and add automated intelligence such as redundancy logic.

## DataMiner Artel DL4000 Platform Management

- Based on the global leading and widely deployed multi-vendor network management platform DataMiner.
- Enabling operators to manage their DL4000 platform ecosystems end-to-end from within a single screen.
- Along with any auxiliary third party devices. DataMiner is guaranteed to interface with any device or system from any vendor, irrespective of the protocol required and features today more than 2000 drivers for solutions from more than 350 different vendors.
- Scalable from small to very large corporate deployments, because of the powerful distributed intelligence architecture.

## Comprehensive alarm management

- User-definable alarm thresholds on any DL4000 platform reading.
- Multi-user management of active alarms, including filtering, sorting, exporting, etc.
- Query historical alarms for any user-defined time span.



Powerful graphical user interface



Performance management