



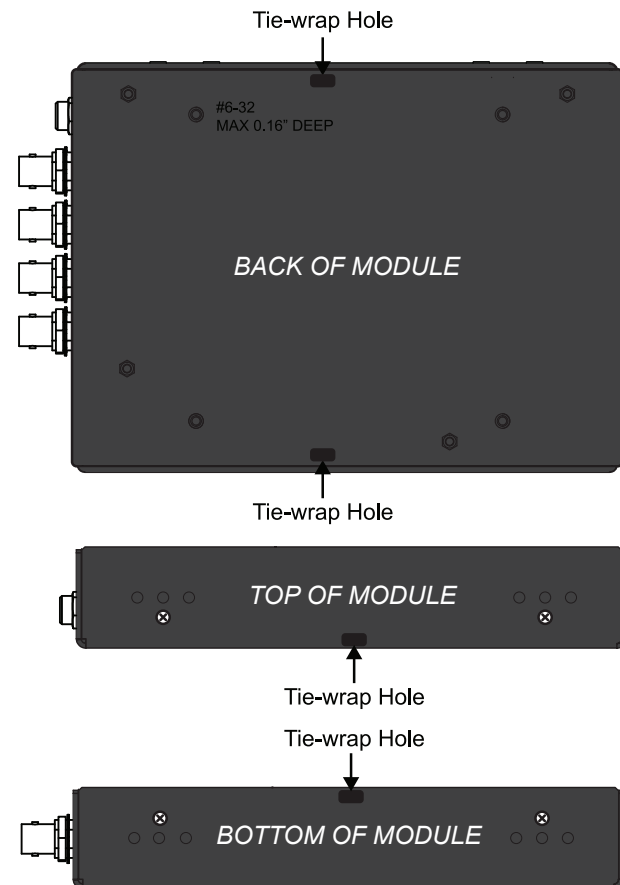
# FL ST2110 Gateway Installation



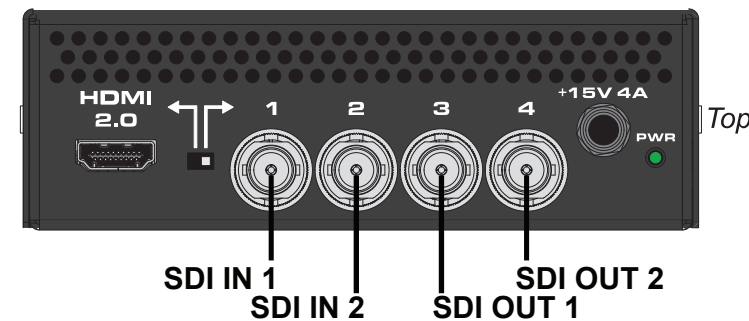
Before you set up and operate your FL ST2110 see the "Important Regulatory and Safety Notices" that shipped with your unit. It is also recommended to refer to the FL ST2110 User Guide. The FL ST2110 User Guide is available for download from our website.

## Mounting via Tie-wraps

**Note:** If you received an Install Kit with your FL ST2110, refer to the guide that shipped with your kit for mounting details.



## 2-in/2-out SDI/IP Converter Cabling



## Assigning the IP Address(es)

**Note:** DashBoard must run on a computer with a physical wired Ethernet connection and configured with an IP address in the same range as the default address of the FL ST2110 (192.168.0.100).

### To assign the IP Address(es) to the FL ST2110

1. Ensure that you are running DashBoard software version 8.4.0 or higher.  
**Note:** The DashBoard software is available at:  
<https://www.rossvideo.com/support/software-downloads/dashboard/>
2. Launch DashBoard by double-clicking its icon on your computer desktop.
3. Select **File > Show Walkabout**.
4. Click **Refresh**.
5. Locate the FL ST2110 in the Walkabout table.  
There is a table entry for each FL ST2110 Port (CONTROL, NET 1, and NET 2).
6. Use the **Address** field for each Port to specify the new IP Address(es) supplied by your IT Department for this device.
7. Ensure the other fields in the table are set to match your network requirements.
8. Click **Reboot** in the row of the Walkabout table for the FL ST2110.
9. Manually add the FL ST2110 to the Tree View in DashBoard as outlined in "Adding a unit to the Tree View" in this guide

**Note:** Press the **Reset** button to reset the FL ST2110, including the IP Addresses, to the default settings. This button is located under the **CONTROL** port.

**Note:** Press the **Reset** button to reset the FL ST2110, including the IP Addresses, to the default settings. This button is located under the **CONTROL** port.

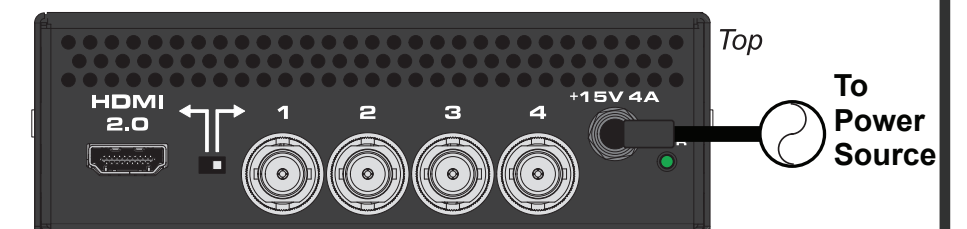
## Power Connections



The power supply connector of the FL ST2110 power supply module must be fully inserted into the FL ST2110 PSU port and the locking collar fully secured before use. Failure to do so may damage the PSU port on the FL ST2110 chassis.



Ensure to connect the DC Power cord of the power supply to the PSU port on the FL ST2110 chassis before connecting the power supply to the power source.



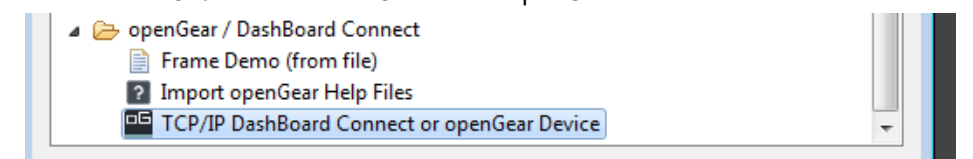
**Note:** The FL ST2110 powers on automatically when the power supply is plugged in.

## Adding a unit to the Tree View

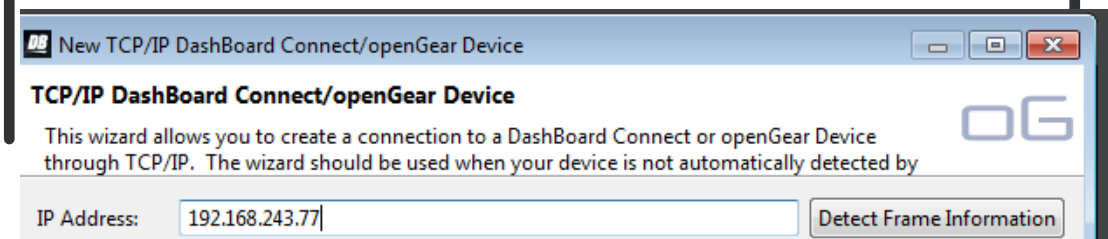
Use the "+" button on the tree view to add the FL2110 to your tree view



Select the TCP/IP Dashboard Connect or openGear Device button

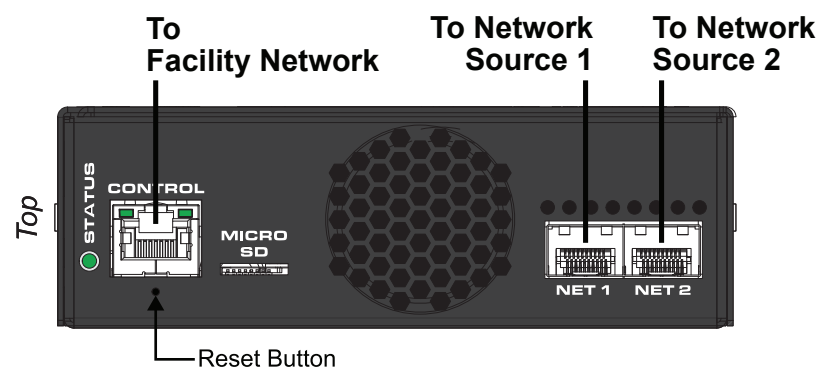


Enter the device IP Address, press the Detect Frame Information, and click Finish



The DashBoard will extract the device information and add the device to the tree view

## Network Cabling



Have a question? Call our 24-hour technical support hotline to speak with a live product specialist located right here in our facility.

Tel: (+1) 978-263-5775

Email: <https://www.artel.com/contact/>

