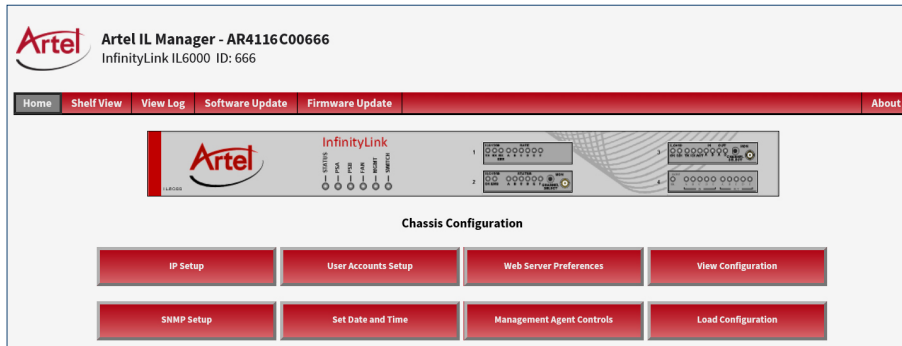




InfinityLink Manager SNMPv2, HTTP Element Management System (EMS)



InfinityLink Manager Home Page

InfinityLink Manager is an HTTP and SNMPv2 based Element Management System (EMS) for monitoring, configuration, and management of InfinityLink chassis, function modules, optics, and power supplies.

Embedded in the InfinityLink chassis and all its elements, it requires no external software or add-ins to monitor and configure all active elements of the platform. InfinityLink Manager (IL Manager) is compatible with all HTTP compatible systems, is capable of monitoring

and managing multiple chassis through a single Ethernet connection and features a time-stamped log of key information about chassis activity. With integrated SNMPv2, IL Manager can easily integrate into third party NMS.

InfinityLink integration with Dimetis BOSS LINK Manager®

Artel and Dimetis have partnered to offer a complete NMS and scheduling solution for your InfinityLink media transport network. Dimetis BOSS LINK Manager® simplifies engineering, planning and operation of networks independently from the infrastructures deployed. Users can create and deliver services across wide area networks in seconds, through a simple graphical user interface. Scheduling, network performance, fault management, and the discovery capabilities of BOSS LINK Manager® combined with the

simplicity of installation and support of InfinityLink make deploying and supporting media transport networks easier and more cost effective than ever.

- Full featured Network Management System
- Scheduling and service orchestration
- Inventory tracking
- Network performance monitoring
- Root cause analysis and fault management
- Reporting, SLA management and data collection

FEATURES

SNMPv2 and web monitoring and management

- InfinityLink chassis
- Function modules
- Power supplies

Monitoring

- Auto detect cards and configurations
- Major and minor alarms and events
- Detailed card status
- Alarm status
- Alarm details
- Receive light levels
- Temperature
- Video status and rates

Provisioning

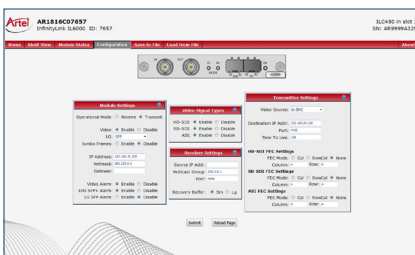
- Configure function (transmitter/receiver/repeater)
- Change input source (BNC or other module in chassis)
- Configure IP settings
- Enable or disable features and channels

Non-volatile time stamped event log

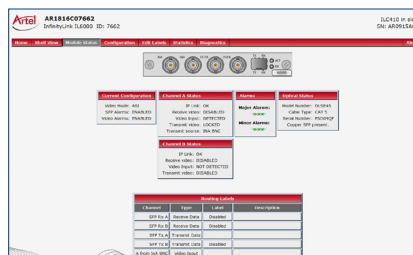
- Major/minor alarms
- Startup sequence
- New hardware installation
- Configuration modifications
- Video presence
- Update of firmware
- Revision status

Maintenance

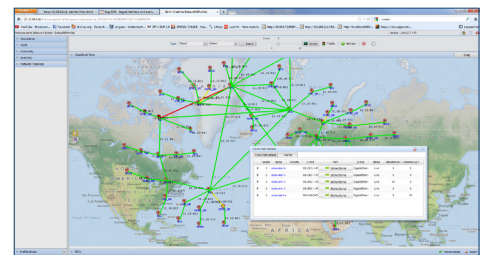
- Download/upgrade firmware
- Download/upgrade management software



Configure and route.



Monitor function module status.



Dimetis BOSS LINK Manager®

UPDATED 11/04/2016
All specifications subject to change without notice.
©2016
AR206-600130-00_C



T: +1 978-263-5775
sales@artel.com
customer@artel.com
www.artel.com