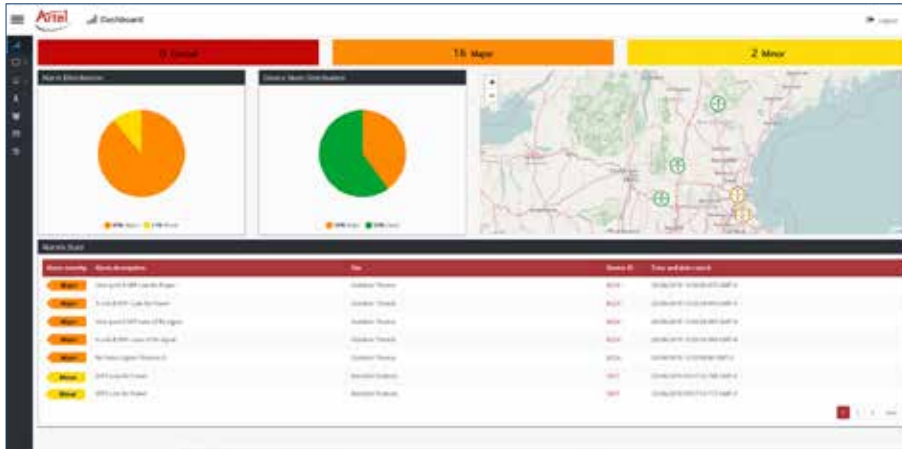




xView Management Platform



xView Dashboard

xView is a browser-based, network-level monitoring platform to aid operators in managing Artel’s DigiLink, InfinityLink, and SMART Media Delivery Platform™ solutions.

xView is a browser based network level monitoring platform to aid operators in the areas of fault management. xView presents a network level view of the DigiLink and InfinityLink systems deployed in a geographical area, provides alarm status, and specifics on active alarms using SNMP messages generated by the devices it is monitoring. DL Manager and IL Manager sessions can be launched from within xView to provide further fault, performance, upgrade, and configuration management. xView is accessed via an authentication and authorization session.

xView can be deployed in a tiered architecture, providing aggregation of Artel network elements for scaling purposes to meet larger network requirements or to accommodate a tiered operations model where there are national and regional views and interests.

Many deployments subscribe to a “tiered” approach where regions and sub-regions collaborate with a national operating center requiring several instances of xView servers providing access to Artel systems via a management network.



Alarm Log View



Alarm History View

FEATURES

Monitoring of DigiLink and InfinityLink systems on network

Launch DL Manager or IL Manager sessions from xView for additional diagnostics and management

Displays

- Geographical map of DigiLink and InfinityLink systems and alarms
- Table of Active Alarms
- Alarm Logs
- Alarm History

Table of Active Alarms

- Severity
- Description
- Site and Device ID
- Time and Date

Provisioning for Tiered Architectures

- Device Management
- Site Management
- User Management : Authentication and Authorization
- User Logs

Download/upgrade xView software via web



Launch DL/IL Manager for more diagnostics

Sales



T: +1 978-263-5775
sales@artel.com
customer@artel.com
www.artel.com