



FiberLink® Beamer-V™ 3100 & 3101

Fiber optic transmission of composite video in a simple, low-cost system

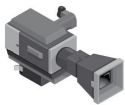
■ INSTALLATION INSTRUCTIONS

See Figure 1 below for assistance during installation. Please note that Beamer-V Box units (transmitter P/N 3100 and receiver P/N 3101) may be used in conjunction with 2-channel card versions of Beamer-V (transmitter P/N 3108A and receiver P/N 3109A). If you are connecting one or more box units to a card unit, please refer to the manual that came with your card unit for installation instructions regarding that portion of your system.

The following instructions describe the typical installation procedure:

1. Mount the Beamer-V transmitter at the camera or source of video to be transmitted. Use the mounting tabs on the housing or the enclosed self-adhesive mounting pad.
2. Connect one of the plug-in power supplies to the input connector on the Beamer-V transmitter. If an external power source is to be used, be certain it provides regulated 12 volts DC+10%. Current from this source will not exceed 250 ma. When power is applied, the red PWR indicator LED will glow. Note that the (-) side of the power input is connected to the enclosure.
3. On the Beamer-V transmitter, connect the video signal to be transmitted to the BNC connector and the ST fiber optic cable plug to the optical connector.
4. Mount the Beamer-V receiver at the monitor or device where the video will be received.
5. Connect the remaining plug-in power supply to the Beamer-V receiver's input connector. If an external power source is to be used, be certain it provides regulated 12 volts DC +10%. Current from this source will not exceed 250 ma. When power is applied, the red PWR indicator LED will glow. Note that the (-) side of the power input is connected to the enclosure.
6. Connect the video monitor or other video receiving device to the BNC connector on the Beamer-V's receiver and the fiber optic cable plug to the Beamer-V receiver's optical connector.
7. For a pleasing picture, slowly adjust the LEVEL control on the Beamer-V's receiver. If high accuracy is required, set this level to 1 volt pp with a 75 ohm load.
8. Your Beamer-V video transmission system is now installed.

Video Camera



Beamer-V Tx



Fiber Cable

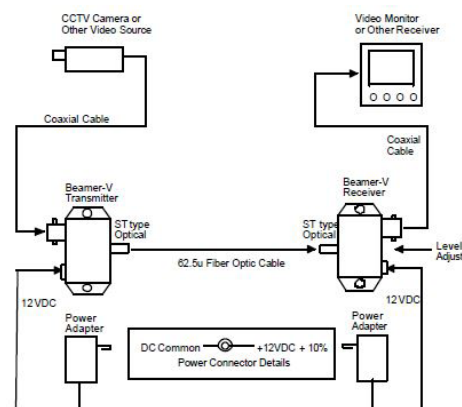
Beamer-V Rx



Monitor



Figure 1: Installation of Beamer-V



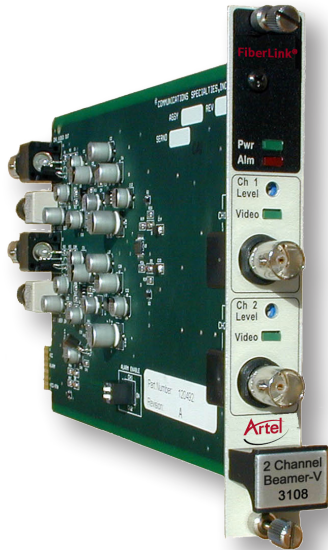
Installation of Beamer-V Fiber Optic Transmission System



FiberLink® Beamer-V™ 3108A & 3109A

Fiber optic transmission of composite video
in a simple, low-cost system

■ INSTALLATION INSTRUCTIONS



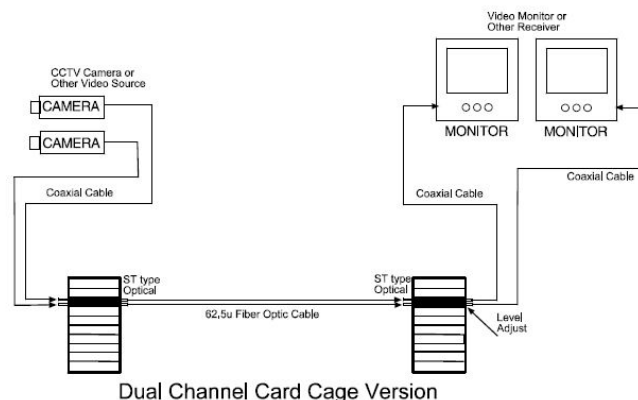
See Figure 2 below for assistance during installation. Please note that Beamer-V dual-channel card versions (transmitter P/N 3108 and receiver P/N 3109) may be used in conjunction with the Beamer-V box units (transmitter P/N 3100 and receiver P/N 3101). If you are connecting one or more card units to a box unit, please refer to the other side of this document for installation instructions regarding that portion of your system.

The following instructions describe the typical installation procedure:

1. Plug the unit into any free position in a model 6000A card-cage.
2. On the Beamer-V transmitter card, connect the cameras or source of video to be transmitted to the BNC connectors and the ST fiber optic cable plugs to the optical connectors.
3. Connect the Beamer-V receiver card at the monitor or device where the video will be received to the BNC connectors and the ST fiber optic cable plugs to the optical connectors.
4. When power is applied, the red PWR indicator LED will glow. All operating power for the Beamer-V dual-channel transmitter and receiver cards is provided by the 6000A card-cage into which the unit is plugged. Be certain to make all connections carefully and check that the correct positions are being used.
5. Your Beamer-V video transmission system is now installed.
6. For a pleasing picture, slowly adjust the LEVEL control on the Beamer-V's receiver. If high accuracy is required, set this level to 1 volt pp with a 75 ohm load.

If the above is correct and the system will still not operate properly, call our customer service department for further assistance.

Figure 2: Dual Channel Card Cage Version



Sales



T: 978-263-5775
www.artel.com
sales@artel.com
customercare@artel.com